



pure indoor living


XPRESS COMFORT™ HEATERS



FEEL
THE **HEAT**
IN
3
SECONDS

Instruction Leaflet

Read instructions before operating. Retain for future reference.

 Questions? Comments? Call 1-800-253-2764 in North America
or visit our website at www.bionairecanada.com.

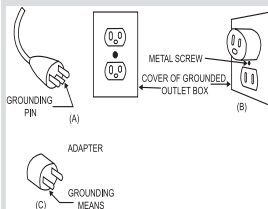
PLEASE READ AND SAVE THESE IMPORTANT SAFETY INSTRUCTIONS

When using electrical appliances, basic safety precautions should always be followed to reduce the risk of fire, electric shock, and injury to persons, including the following:

1. Read all instructions before using this heater.
2. This heater is hot when in use. To avoid burns, do not let bare skin touch hot surfaces. If provided, use handles when moving this heater. Keep combustible materials, such as furniture, pillows, bedding, papers, clothes, and curtains at least 3 feet (0.9 m) from the front of the heater and keep them away from the sides and rear.
3. Extreme caution is necessary when any heater is used by or near children or invalids and whenever the heater is left operating and unattended.
4. Always unplug heater when not in use.
5. Do not operate any heater with a damaged cord or plug or after the heater malfunctions, has been dropped or damaged in any manner. Discard heater, or return to authorized service facility for examination and/or repair.
6. Do not use outdoors.
7. This heater is not intended for use in bathrooms, laundry areas and similar indoor locations. Never locate heater where it may fall into a bathtub or other water container.
8. Do not run cord under carpeting. Do not cover cord with throw rugs, runners, or similar coverings. Do not route cord under furniture or appliances. Arrange cord away from traffic area and where it will not be tripped over.
9. To disconnect heater, turn controls to off, then remove plug from outlet.
10. Do not insert or allow foreign objects to enter any ventilation or exhaust opening as this may cause an electric shock or fire, or damage the heater.
11. To prevent a possible fire, do not block air intakes or exhaust in any manner. Do not use on soft surfaces, like a bed, where openings may become blocked.
12. A heater has hot and arcing or sparking parts inside. Do not use it in areas where gasoline, paint, or flammable liquids are used or stored.
13. Use this heater only as described in this manual. Any other use not recommended by the manufacturer may cause fire, electric shock, or injury to persons.
14. Always plug heaters directly into a wall outlet/receptacle. Never use with an extension cord or relocatable power tap (outlet/power strip).
15. When unplugging, be sure to pull by the plug and not the cord.
16. If the heater will not operate, see specific instructions on Auto Safety Shut-off.
17. DO NOT attempt to repair or adjust any electrical or mechanical functions on this unit. Doing so will void your warranty. The inside of the unit contains no user serviceable parts. All servicing should be performed by qualified personnel only.
18. Discontinue use if plug or outlet is hot. It is recommended that the outlet be replaced if plug or outlet is hot to touch.
19. The heater must not be located immediately below a socket-outlet. Do not use this heater in the immediate surroundings of a bath, a shower or a swimming pool.

NOTE: This unit is for FLOOR USE ONLY.

20. This appliance is not intended for use by persons (including children) with reduced physical, sensory or mental capabilities, or lack of experience and knowledge, unless they have been given supervision



To reduce the risk of electric shock, **THIS PRODUCT IS EQUIPPED WITH A 3-PRONG PLUG**, a grounding type plug that has a third (grounding) pin. The cord has a plug (A) as shown. An adapter (C) can be purchased for connecting three-blade grounding-type plugs to two slot receptacles (B). The green grounding wire or lug extending from the adapter must be connected to a permanent ground such as a properly grounded outlet box. The adapter should not be used if a three-slot grounded receptacle is available. This plug will only fit into a grounding type power outlet. If the plug does not fit into the outlet, contact qualified electrician to install the proper outlet. This product is for use on 120 volts.

DO NOT ALTER THE PLUG IN ANY WAY

FEATURES / ASSEMBLY

or instruction concerning use of the appliance by a person responsible for their safety. Children should be supervised to ensure that they do not play with the appliance.

21. Do not use this heater with a programmer, timer, separate remote-control system or any other device that switches the heater on automatically, since a fire risk exists if the heater is covered or positioned incorrectly.
22. **WARNING:** This heater is not equipped with a device to control the room temperature. Do not use this heater in small rooms when they are occupied by persons not capable of leaving the room on their own, unless constant supervision is provided.
23. **WARNING:** When the halogen lamp lights, the product is in the energized state.
24. **WARNING:** In order to avoid overheating, do not cover the heater.

SAVE THESE INSTRUCTIONS

TECHNICAL SPECIFICATIONS

- Amps: 12.5
- Wattage: 1500 W (+5% –10%)
- Working voltage: 120v AC/60Hz

INFRARED TECHNOLOGY

The infrared technology incorporates instant heat with a fan system to provide maximum heat dispersion. The heater delivers a combination of instant, penetrating warmth in the immediate area while forcing heat throughout the room.

Figure 1

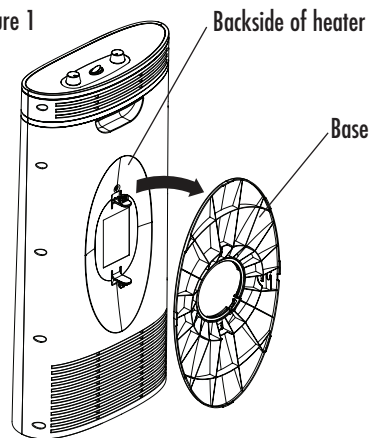


Figure 2

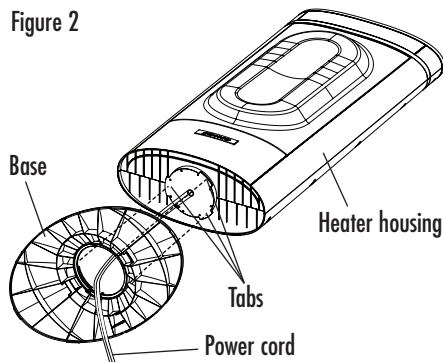
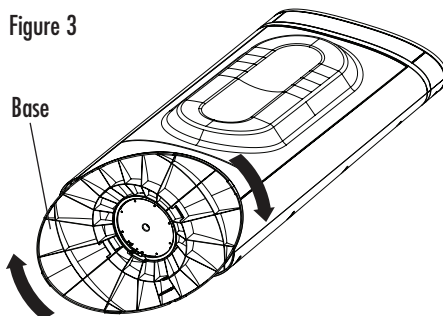


Figure 3



FEATURES - OPERATIONS

Figure 4

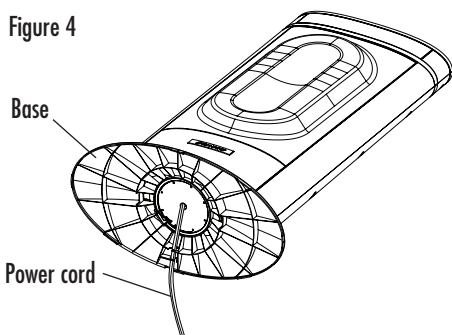


Figure 5

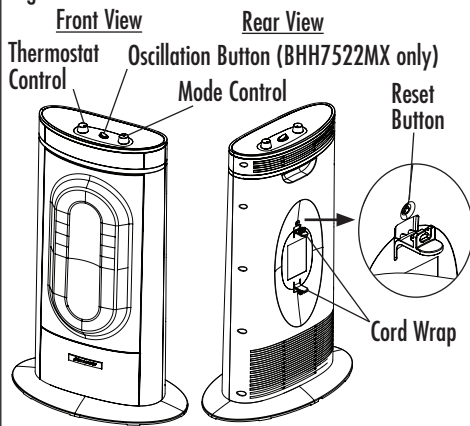
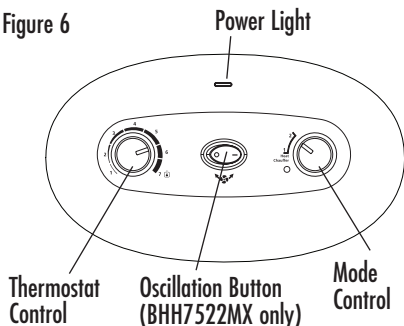


Figure 6



ASSEMBLY INSTRUCTIONS

Carefully remove your heater from the box. Please save the carton for off-season storage.

Base Assembly

There is a Base attached to the backside of the heater when packed inside the box, you need to take out the Base to prepare for assembly (Figure 1):

1. Pull the power cord through the center hole of the Base.
2. Line up the Tabs at the bottom of Heater Housing into the Base (Figure 2).
3. Rotate the Base into the Heater Housing until the Base is securely locked (Figure 3).
4. Run the Power Cord through the cord channel located underneath the base. (Figure 4).
5. Turn the heater right side up on a flat level surface prior to beginning operation (Figure 5).
6. Use the cord wrap at the backside of the heater to hide extra cord when the heater is not in use.

OPERATING INSTRUCTIONS

1. Make sure the unit is in the Off position before plugging the heater into the outlet.
2. Avoid overloading your circuit by not using other high wattage appliances in the same outlet. At 1500 Watts, this unit draws 12.5 Amps.

Mode Control

Turn the Mode Control to the desired setting:

○ - Off Mode

If you want to shut off the heater at any time of operation, turn the Mode Control to Off (○) position. Power Light may remain lit until the heater is unplugged.

1 - Low Heat

The heater will run continuously at 900W.

2 - High Heat

The heater will run continuously at 1500W.

FEATURES - OPERATIONS



Thermostat Control

1. Before setting the thermostat, allow heater to operate and warm up the room. You need to turn the Thermostat Control clockwise to the highest setting (7) to start the heater.
2. When the desired temperature comfort level is reached, lower the thermostat setting until the heater stops operating. This is done by turning the Thermostat Control counter-clockwise and select from the 7 temperature levels (1-7).

NOTE: It is normal for the heater to cycle ON and OFF as it maintains the preset temperature. To prevent the unit from cycling, raise the thermostat to the highest setting (7).

CAUTION: FRONT GRILL IS HOT WHEN UNIT IS IN OPERATION.



Oscillation (BHH7522MX only)

Press the Oscillation Button (🌀) to activate or stop the oscillation feature.

NOTE: Please do not manually turn the heater on the base. It is designed to turn only by motorized oscillation.

CLEANING/MAINTENANCE

Always unplug the heater before cleaning and allow the heater to cool down.

1. Clean the unit with a soft cloth moistened with a mild soap solution.
2. NEVER use abrasive or flammable solvents to clean the unit.
3. After cleaning, be sure to completely dry the unit with a cloth or towel.
4. Store heater in a cool, dry location.
5. It is recommended that you store the unit in its original carton.

TIP: Over time, dust may accumulate on the front grills. This can be removed by wiping the unit with a damp cloth.

CLEANING / MAINTENANCE TROUBLESHOOTING

AUTO SAFETY SHUT-OFF WITH INSTANT TIP OVER PROTECTION

This heater is equipped with a technologically-advanced safety system that requires the user to reset the heater if there is a potential overheat situation. When a potential overheat temperature is reached, the system will automatically shut the heater off. It can only resume operation when the user resets the unit. For specific reset instructions please refer to the unit.

RESET INSTRUCTIONS

If your heater shuts down:

- 1) Turn Control to OFF.
- 2) Unplug the unit and wait 30 minutes.
- 3) Plug in, press the Reset Button on the backside of the unit and operate normally.

Tip Over Shut-Off:

When the unit is accidentally knocked over, it will instantly shut off. The unit may also shut off if it is moved or bumped. To reset, simply place the heater in an upright position and it will operate normally.

NOTE: If unit does not turn on when placed in the upright position, turn the Mode Control to High Heat setting and heater will resume operation.

TROUBLESHOOTING

If your heater fails to operate:

- The thermostat might be set too low. Turn the Thermostat Control clockwise until the heater restarts.
- Make sure Mode Control is in Low Heat or High Heat setting.
- **UNPLUG THE UNIT** and make sure the heater is placed in an upright position.
- Make sure the electrical outlet or circuit breaker is working.
- Check for obstructions. If you find an obstruction turn the heater OFF, and unplug the unit. Carefully remove the obstruction and follow the reset instructions.

Please DO NOT attempt to open or repair the heater.

If you have any questions regarding your product or would like to learn more about other Bonaire® products, please contact our Consumer Service Department at 1-800-253-2764 or visit our website at www.bonairecanada.com. For inquiries regarding recycling and proper disposal of this product, please contact your local waste management facility.

WARRANTY INFORMATION

In Canada

If you have any question regarding this warranty or would like to obtain warranty service, please call 1-800-253-2764 and a convenient service center address will be provided to you.

In the U.S.A., this warranty is offered by Sunbeam Products, Inc. doing business as Jarden Consumer Solutions located in Boca Raton, Florida 33431. In Canada, this warranty is offered by Sunbeam Corporation (Canada) Limited doing business as Jarden Consumer Solutions, located at 20 B Hereford Street, Brampton, Ontario L6Y 0M1. If you have any other problem or claim in connection with this product, please write our Consumer Service Department. **PLEASE DO NOT RETURN THIS PRODUCT TO ANY OF THESE ADDRESSES OR TO THE PLACE OF PURCHASE.**

WARRANTY INFORMATION

1 YEAR LIMITED WARRANTY

Sunbeam Products, Inc. doing business as Jarden Consumer Solutions or if in Canada, Sunbeam Corporation (Canada) Limited doing business as Jarden Consumer Solutions (collectively "JCS") warrants that for a period of one year from the date of purchase, this product will be free from defects in material and workmanship. JCS, at its option, will repair or replace this product or any component of the product found to be defective during the warranty period. Replacement will be made with a new or remanufactured product or component. If the product is no longer available, replacement may be made with a similar product of equal or greater value. This is your exclusive warranty. Do NOT attempt to repair or adjust any electrical or mechanical functions on this product. Doing so will void this warranty. This warranty is valid for the original retail purchaser from the date of initial retail purchase and is not transferable. Keep the original sales receipt. Proof of purchase is required to obtain warranty performance. JCS dealers, service centers, or retail stores selling JCS products do not have the right to alter, modify or any way change the terms and conditions of this warranty.

This warranty does not cover normal wear of parts or damage resulting from any of the following: negligent use or misuse of the product, use on improper voltage or current, use contrary to the operating instructions, disassembly, repair or alteration by anyone other than JCS or an authorized JCS service center. Further, the warranty does not cover: Acts of God, such as fire, flood, hurricanes and tornadoes.

What are the limits on JCS's Liability?

JCS shall not be liable for any incidental or consequential damages caused by the breach of any express, implied or statutory warranty or condition.

Except to the extent prohibited by applicable law, any implied warranty or condition of merchantability or fitness for a particular purpose is limited in duration to the duration of the above warranty.

JCS disclaims all other warranties, conditions or representations, express, implied, statutory or otherwise.

JCS shall not be liable for any damages of any kind resulting from the purchase, use or misuse of, or inability to use the product including incidental, special, consequential or similar damages or loss of profits, or for any breach of contract, fundamental or otherwise, or for any claim brought against purchaser by any other party.

Some provinces, states or jurisdictions do not allow the exclusion or limitation of incidental or consequential damages or limitations on how long an implied warranty lasts, so the above limitations or exclusion may not apply to you.

This warranty gives you specific legal rights, and you may also have other rights that vary from province to province, state to state or jurisdiction to jurisdiction.

How to Obtain Warranty Service

In the U.S.A.

If you have any question regarding this warranty or would like to obtain warranty service, please call 1-800-253-2764 and a convenient service center address will be provided to you.